



# SAP INDUSTRIES

A-541, T.T.C. INDUSTRIAL AREA, M.I.D.C., MAHAPE, NAVIMUMBAI - 400710. INDIA.  
 ISD : +9122 NSD : 022 PHONE : 2778 1819 FACT. M : +919320012042

E-mail : [siwi@vsnl.com](mailto:siwi@vsnl.com)  
[www.sapindustries.in](http://www.sapindustries.in)

## CYLINDER VALVE - IS:3224 - 1979 (AMENDMENT NO.7 DECEMBER 1994)

## VALVE ADAPTORS IS:3224

'TEE'

'L'

VALVE  
 OUTLET

NIPPLE  
 NUT

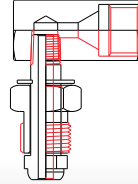
VALVE  
 OUTLET

ADAPTOR

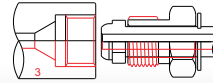
NIPPLE  
 NUT



P.N. 4850

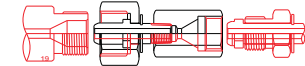


P.N. 4950



**G 5/8 RH**  
 OXYGEN

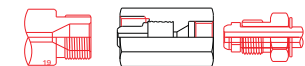
### COMPRESSED AIR



**G 7/8 R.H.**

P.N. 1941

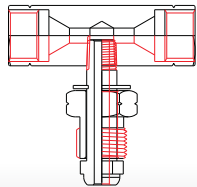
**G 5/8 R.H.**



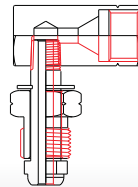
P.N. 1946

### OUTLET 19 TO 3

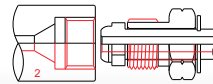
G 7/8 RH FEMALE NUT / NIPPLE  
 X G 5/8 RH FEMALE NUT



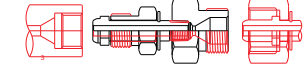
P.N. 4846



P.N. 4946



**G 5/8 LH**  
 ACETYLENE,  
 HYDROGEN, CNG



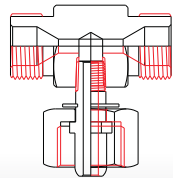
P.N. 1942

**G 5/8 R.H.**

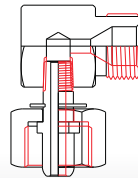
**G 7/8 R.H.**

### OUTLET 3 TO 19

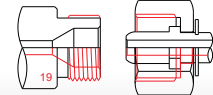
G 5/8 RH MALE NUT / NIPPLE  
 X G 7/8 RH MALE NUT



P.N. 4847



P.N. 4947



**G 7/8 RH**  
 COMPRESSED AIR

### ARGON / HELIUM / NITROGEN NEON / KRYPTON / XENON



P.N. 2041

**G 3/4 R.H.**

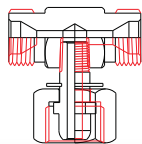
**G 5/8 R.H.**



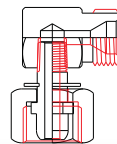
P.N. 2046

### OUTLET 20 TO 3

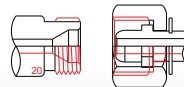
G 3/4 RH FEMALE NUT / NIPPLE  
 X G 5/8 RH FEMALE NUT



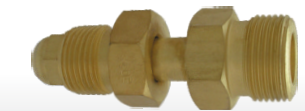
P.N. 4848



P.N. 4948



**G 3/4 RH**  
 ARGON, HELIUM, NITROGEN,  
 NEON, KRYPTON, XENON



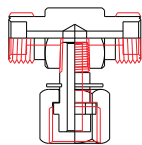
P.N. 2042

**G 5/8 R.H.**

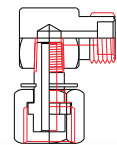
**G 3/4 R.H.**

### OUTLET 20 TO 3

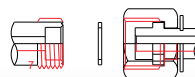
G 5/8 RH MALE NUT / NIPPLE  
 X G 3/4 RH MALE NUT



P.N. 4849



P.N. 4949



WASHER  
**W 21.8 X 14 RH**  
 CARBON DIOXIDE

GLOBAL  
 TYPE  
 VALVE  
 OUTLET

SWIVEL TYPE  
 ADAPTORS  
 MALE TO MALE  
 MALE TO FEMALE  
 FEMALE TO FEMALE  
 FEMALE TO MALE

GLOBAL  
 TYPE  
 NIPPLE  
 NUT

CGA : USA  
 DIN : GERMANY  
 JIS : JAPAN  
 BS : UK