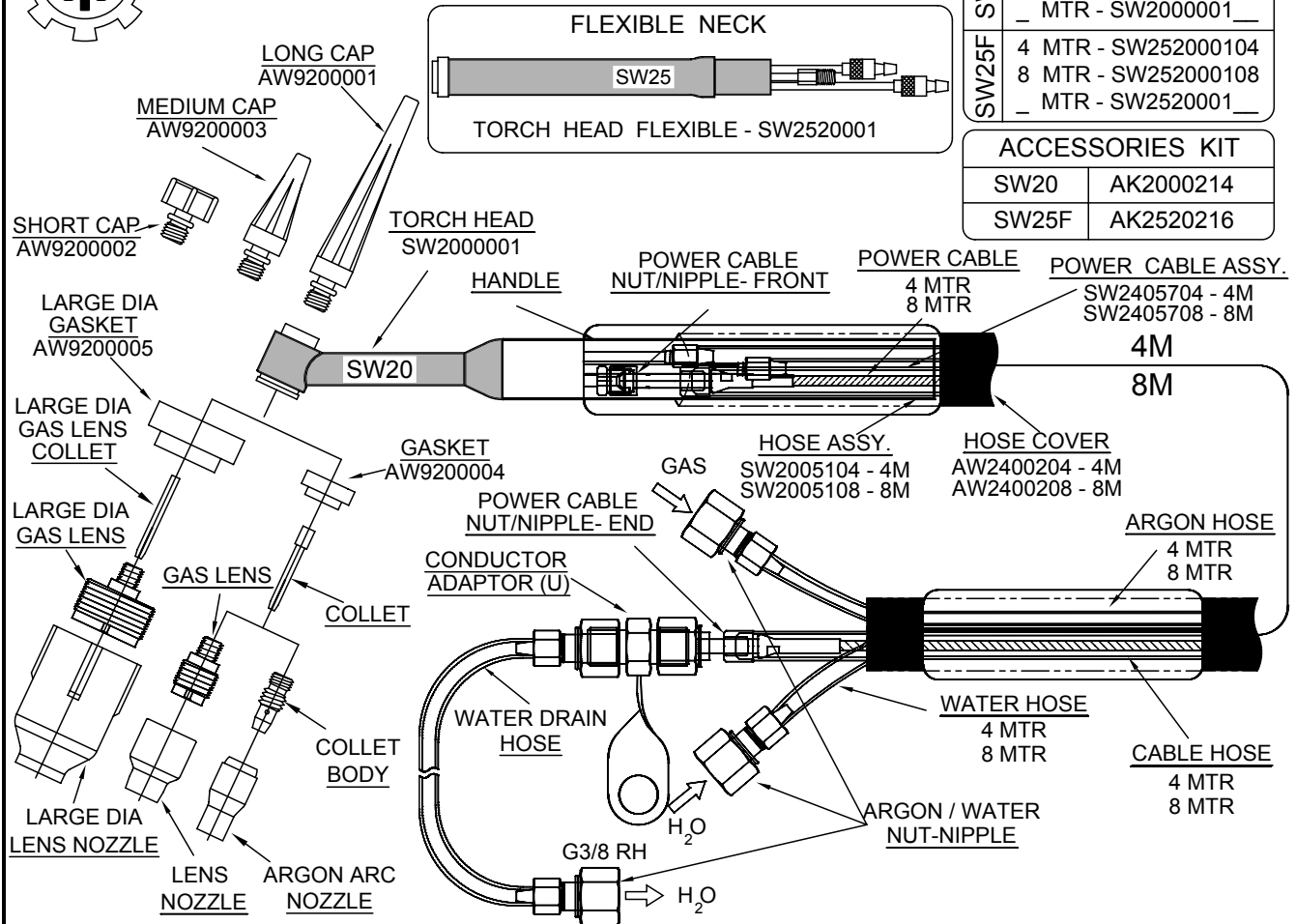


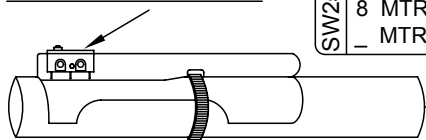
GTAW TORCH - WATER COOLED

MODEL - SW20 (250 AMP) / SW25F (200 AMP)



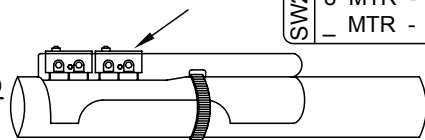
TORCH KIT	
SW20	4 MTR - SW200000104
	8 MTR - SW200000108
	__ MTR - SW2000001__
SW25F	4 MTR - SW252000104
	8 MTR - SW252000108
	__ MTR - SW2520001__
ACCESSORIES KIT	
SW20	AK2000214
SW25F	AK2520216

GAS CONTROL MOMENTARY SWITCH



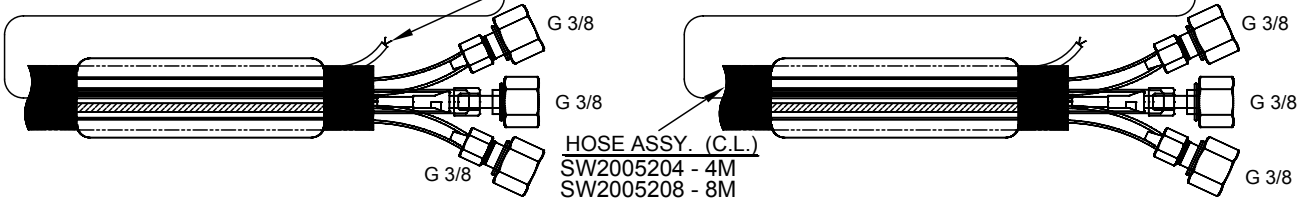
TORCH KIT	
SW20	4 MTR - SW200001104
	8 MTR - SW200001108
	__ MTR - SW2000011__
SW25F	4 MTR - SW252001104
	8 MTR - SW252001108
	__ MTR - SW2520011__

GAS CONTROL ON / OFF SWITCH



TORCH KIT	
SW24	4 MTR - SW200002104
	8 MTR - SW200002108
	__ MTR - SW2000021__
SW25F	4 MTR - SW252002104
	8 MTR - SW252002108
	__ MTR - SW2520021__

CONTACT LEAD
4 MTR
8 MTR



NOTE : MOMENTARY & ON/OFF SWITCH TORCHES ARE WITHOUT CONDUCTOR ADAPTOR & EXT. ASSY. (SELECT HOOKUP KIT PARTS AS PER YOUR REQUIREMENTS)

ARGON ARC NOZZLE LENGTH 30MM	SIZE	COLLET	COLLET BODY	GAS LENS	LENS NOZZLE LENGTH 25	L. D. GL. COLLET	L. DIA GASLENS	L. DIA LENS NOZZLE LENGTH 48			
BORE	PART NO.	MM	PART NO.	PART NO.	BORE	PART NO.	PART NO.	BORE	PART NO.		
6.4 MM	AW9206430	1.0	AW9200010	AW9200210	AW9200110	6.4 MM	AW9206425	AW9200310	AW9200415	9.5 MM	AW2509548
8.0 MM	AW9208030	1.6	AW9200016	AW9200215	AW9200115		AW9200316	12.7 MM		AW2512748	
9.5 MM	AW9209530	2.0	AW9200020	AW9200220	AW9200120	8.0 MM	AW9208025	AW9200320	AW9200425	16.0 MM	AW2516048
11.0 MM	AW9211030	2.4	AW9200092	AW9200225	AW9200125	9.5 MM	AW9209525	AW9200324		19.0 MM	AW2519048
12.7 MM	AW9212730	3.0	AW9200030	AW9200230	AW9200130		AW9200330	AW9200430		23.8 MM	AW2523835 (L-35)
16.0 MM	AW9216030	3.2	AW9200032			11.0 MM	AW9211025		AW9200332		

IN VIEW OF CONTINUOUS DEVELOPMENT, WE RESERVE THE RIGHT TO MODIFY THE DESIGN AND/OR DIMENSIONS WITHOUT NOTICE.